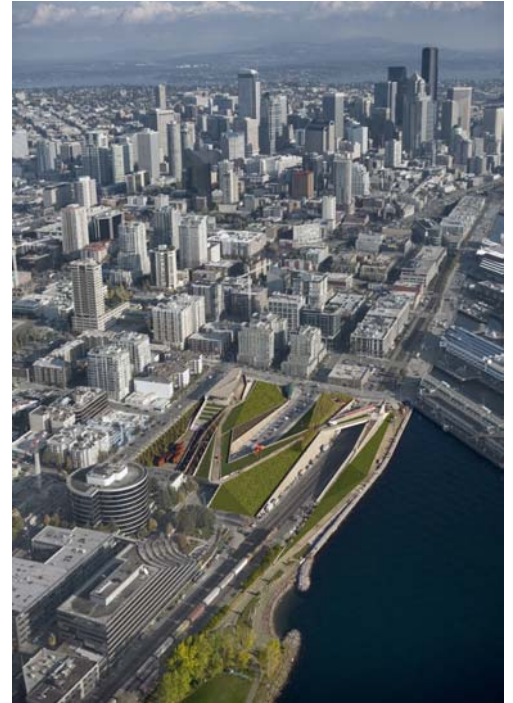


**OLYMPIC SCULPTURE PARK
WEISS/MANFREDI ARCHITECTS
Opening January 20, 2007**



1.



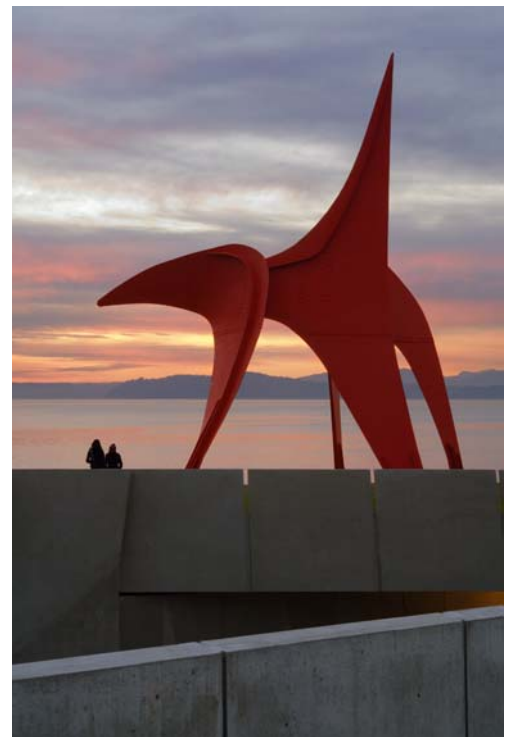
2.



3.



4.



5.

1. Olympic Sculpture Park, aerial view from water / © Benjamin Benschneider and Weiss/Manfredi
2. Olympic Sculpture Park, aerial view / © Soundview Aerial Photography and Weiss/Manfredi
3. Olympic Sculpture Park / Credit: Paul Warchol
4. Olympic Sculpture Park, PACCAR Pavilion and view of Mark Dion's *Neukom Vivarium* / © Benjamin Benschneider and Weiss/Manfredi
5. Olympic Sculpture Park, sunset view of Alexander Calder's *Eagle* / Credit: Paul Warchol

For high-resolution images, contact: Amanda Domizio, Ruder Finn / (212) 583-2798 or domizioa@ruderfinn.com



6.



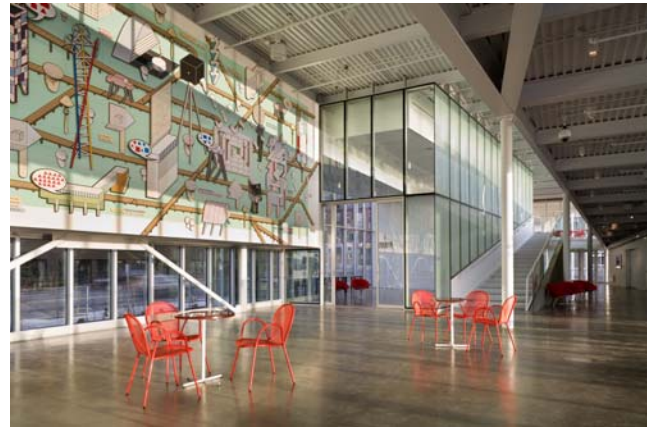
7.



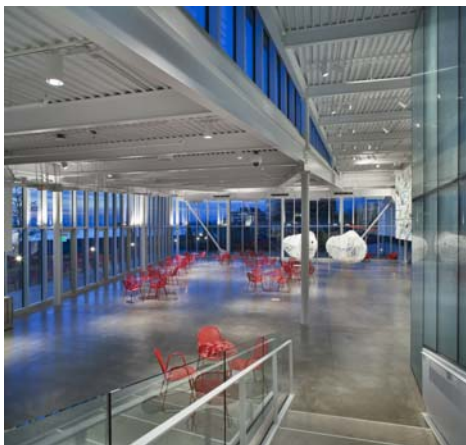
8.



9.



11.



10.

- 6. Olympic Sculpture Park / Credit: Paul Warchol
- 7. Olympic Sculpture Park, view of Roxy Paine's *Split* and Alexander Calder's *Eagle* / Credit: Paul Warchol
- 8. Olympic Sculpture Park, view of PACCAR Pavilion © Benjamin Benschneider and Weiss/Manfredi
- 9. Olympic Sculpture Park, PACCAR Pavilion and Anthony Caro's *Riviera* / © Benjamin Benschneider and Weiss/Manfredi
- 10. Olympic Sculpture Park, PACCAR Pavilion interior and view of Pedro Reyes' *Capula XVI and XVII* / Credit: Paul Warchol
- 11. Olympic Sculpture Park, PACCAR Pavilion interior and view of Pedro Reyes' *Evolving City Mural* / © Benjamin Benschneider and Weiss/Manfredi

For high-resolution images, contact: Amanda Domizio, Ruder Finn / (212) 583-2798 or domizioa@ruderfinn.com